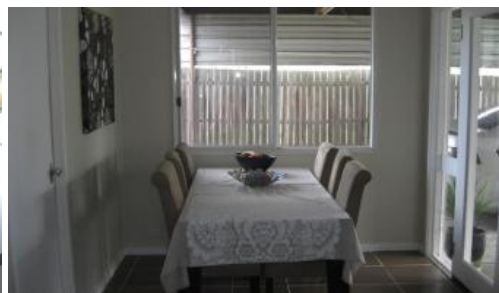
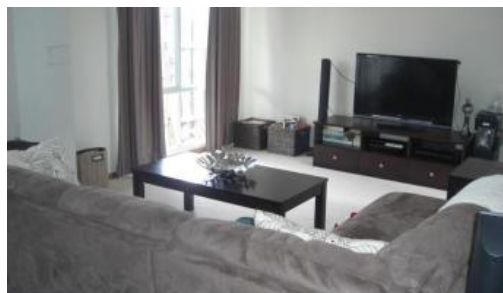


Sold



50 Maple Crescent, Churchill



"A REAL DELIGHT IN CHURCHILL"

🏠 3 🚗 1 🚗 2

This one is absolutely perfect, both inside and out
Stylish open plan lounge with garden outlook
Magnificent kitchen overlooks dining & lounge
3 spacious bedrooms , Modern family bathroom
French doors lead to outdoor area
Double Carport, garden shed, excellent location
Currently leased at \$230 p/w until Feb 2019

Price SOLD
Property Type Residential
Property ID 1047

Agent Details

Chris Davis - 0418 594 460

Office Details

First National Central KW
03 5133 7777

Contact Chris Davis 0418-594460

The above information provided has been furnished to us by the vendor/s. We have not verified whether or not that information is accurate and do not have any belief in one way or the other in its accuracy. We do not accept any responsibility to any person for its accuracy and do no more than pass it on. All interested parties should make and rely upon their own inquiries in order to determine whether or not this information is in fact accurate.

